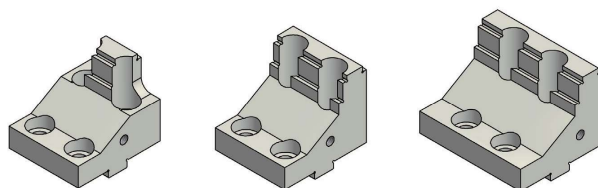
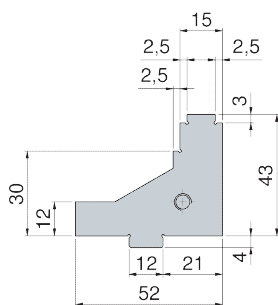


**Feinstufenwendebacke**

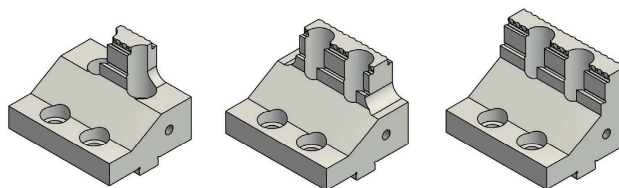
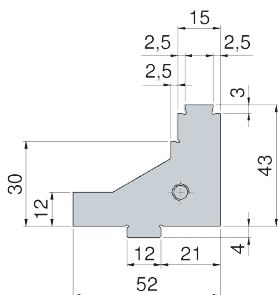
| Breite | Best.-Nr. |
|--------|-----------|
| 20 mm  | 65.020    |
| 44 mm  | 65.044    |
| 64 mm  | 65.064    |



**Spezial-Grip-Wendebacke**

| Breite | Best.-Nr. |
|--------|-----------|
| 20 mm  | 67.020    |
| 44 mm  | 67.044    |
| 64 mm  | 67.064    |

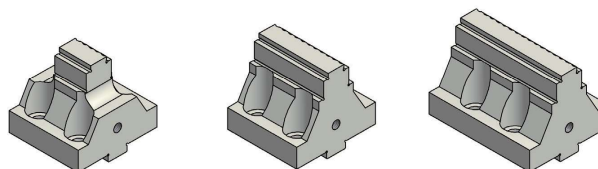
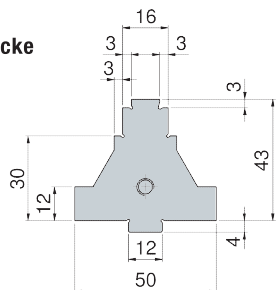
Spannflächen hartmetallbeschichtet



**Feinstufen-/Spezial-Grip-Wendebacke**

| Breite | Best.-Nr. |
|--------|-----------|
| 20 mm  | 68.020    |
| 44 mm  | 68.044    |
| 64 mm  | 68.064    |

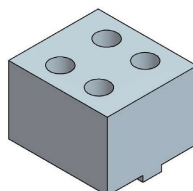
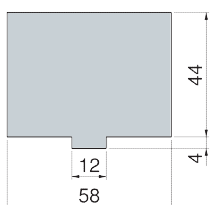
Spannflächen hartmetallbeschichtet



**Weiche Wendebacke**

| Breite | Best.-Nr.         |
|--------|-------------------|
| 64 mm  | 66.064 ST (Stahl) |
| 64 mm  | 66.064 AL (Alu)   |

feingefräst



Befestigungsschrauben im Lieferumfang enthalten