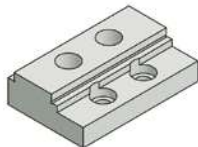
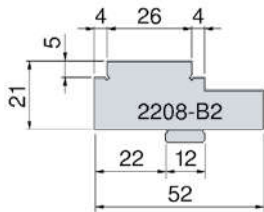


Alle Backen Breite 80 mm

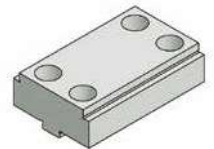
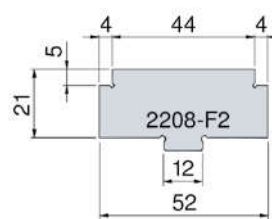
**Bewegliche Stufenwendebacke**

mit Feinstufe 4/5 mm  
Best.-Nr. 2208-B2



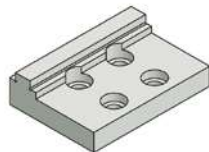
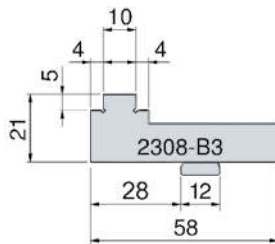
**Stufenmittenbacke**

mit Feinstufe 4/5 mm  
Best.-Nr. 2208-F2



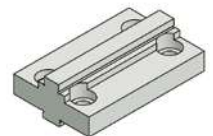
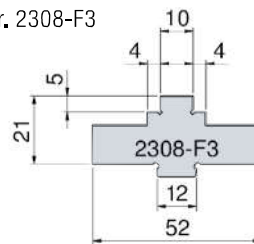
**Bewegliche Stufenwendebacke**

mit Feinstufe 4/5 mm  
Best.-Nr. 2308-B3



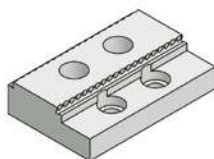
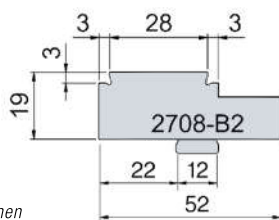
**Stufenmittenbacke**

mit Feinstufe 4/5 mm  
Best.-Nr. 2308-F3



**Bewegliche Spezial-Grip-Backe**

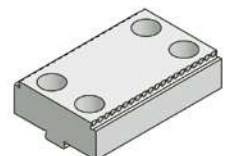
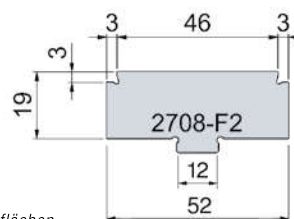
mit Feinstufe 3/3 mm  
Best.-Nr. 2708-B2



Spannflächen  
hartmetallbeschichtet

**Spezial-Grip-Mittenbacke**

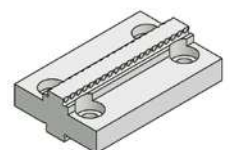
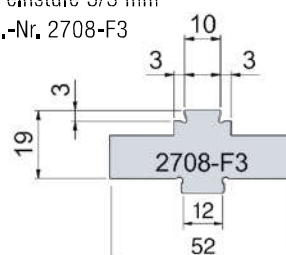
mit Feinstufe 3/3 mm  
Best.-Nr. 2708-F2



Spannflächen  
hartmetallbeschichtet

**Spezial-Grip-Mittenbacke**

mit Feinstufe 3/3 mm  
Best.-Nr. 2708-F3



Spannflächen  
hartmetallbeschichtet

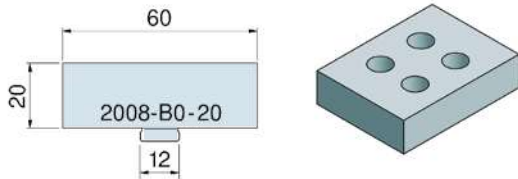
Befestigungsschrauben im Lieferumfang enthalten

Alle Backen Breite 80 mm

### Bewegliche Wendebacke

weich, 20 mm, zur Herstellung von Sonderbacken.

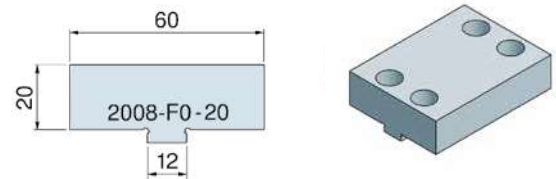
Best.-Nr. 2008-B0-20-AL (Alu)  
2008-B0-20-ST (Stahl)



### Mittenbacke

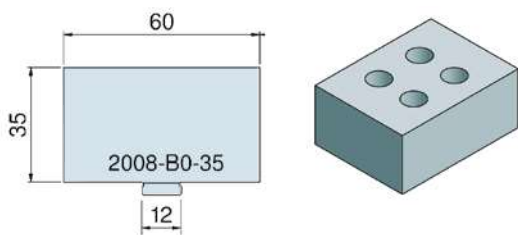
weich, 20 mm, zur Herstellung von Sonderbacken

Best.-Nr. 2008-F0-20 AL (Alu)  
2008-F0-20 ST (Stahl)



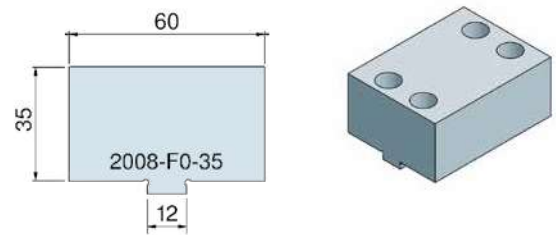
weich, 35 mm

Best.-Nr. 2008-B0-35-AL (Alu)  
2008-B0-35-ST (Stahl)



weich, 35 mm

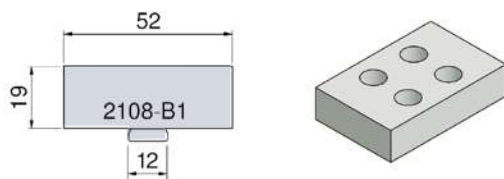
Best.-Nr. 2008-F0-35-AL (Alu)  
2008-F0-35-ST (Stahl)



### Bewegliche Wendebacke

gehärtet, für die Standardspannung

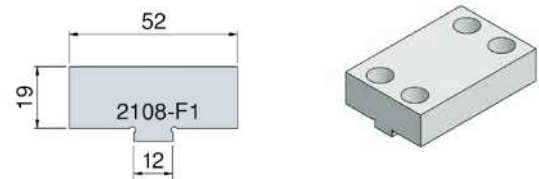
Best.-Nr. 2108-B1



### Mittenbacke

gehärtet, für die Standardspannung

Best.-Nr. 2108-F1



Befestigungsschrauben im Lieferumfang enthalten