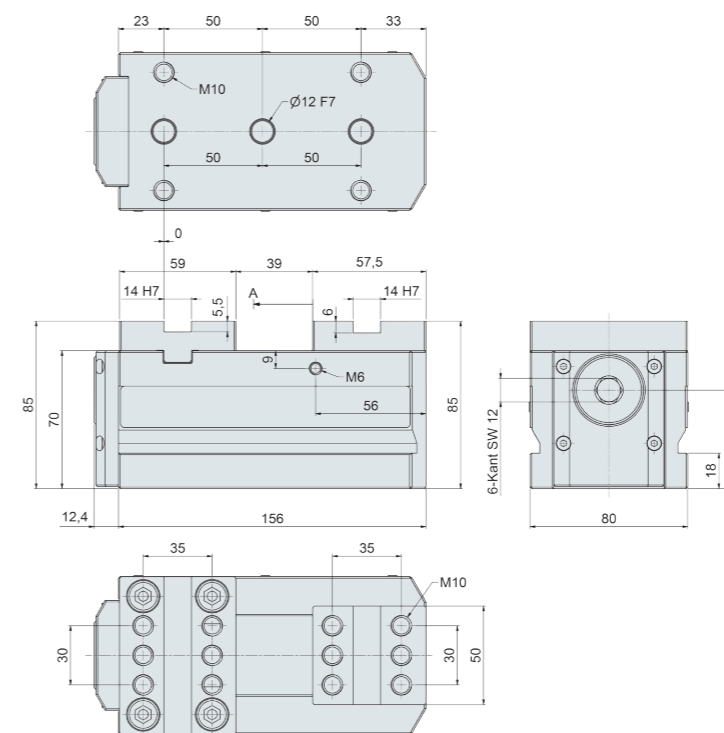


mechanisch

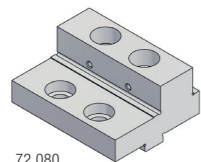


Trigo SCS 80-160 mechanisch

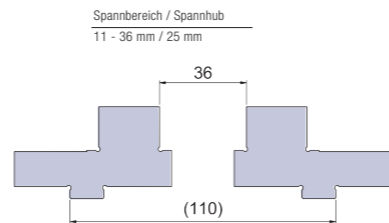
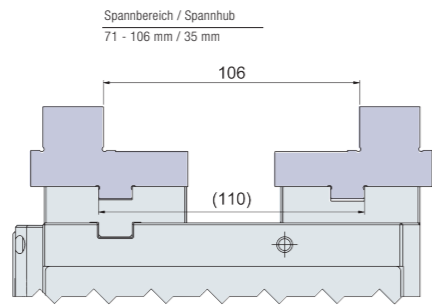
Spannkraft mechanisch	25 kN / 60 Nm
Spannschlittengesamthub A	36 mm
Spannwiederholgenauigkeit	± 0,01 mm
Gewicht	6,0 kg
Bestell-Nr.	SCS80-160M

Spannbackendetails siehe Rubrik 6
Zubehör siehe Rubrik 7

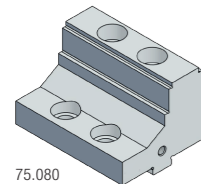
Feinstufenwendebacke



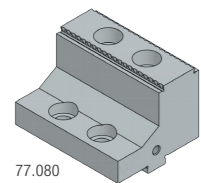
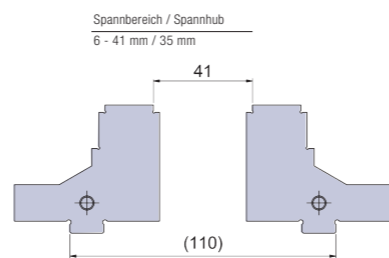
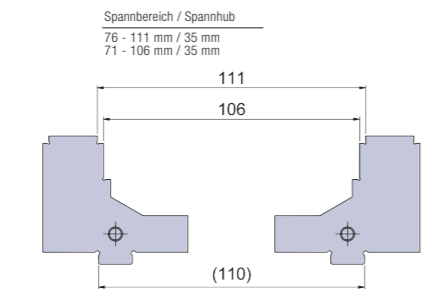
72.080



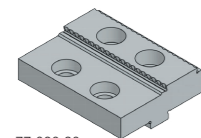
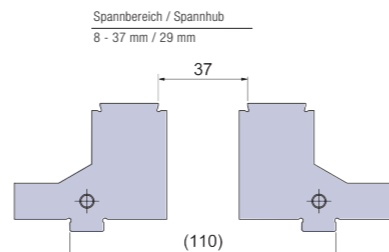
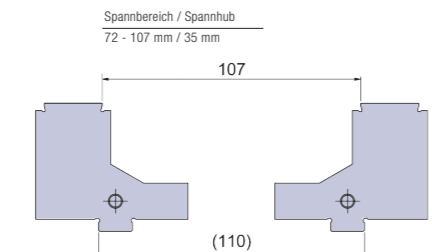
Spezial-Grip-Wendebacken



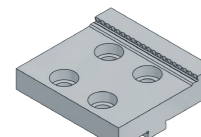
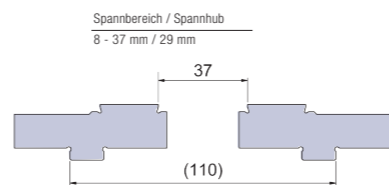
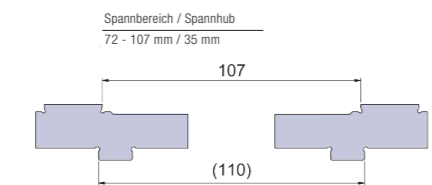
75.080



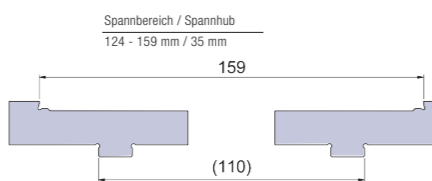
77.080



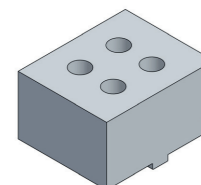
77.080.20



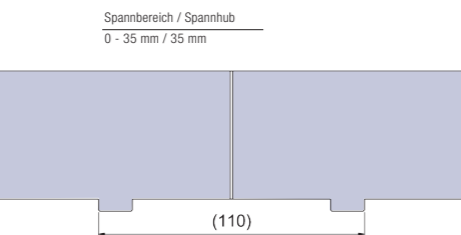
77.080.30



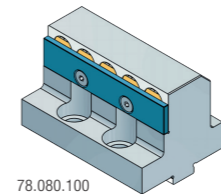
weiche Wendebacken



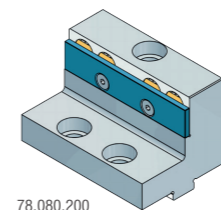
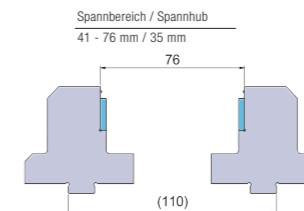
76.080ST
76.080AL



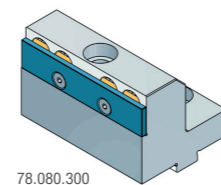
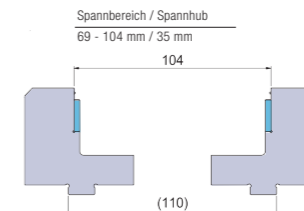
Spannbacken mit einstellbarer Prägetiefe & variabler Spannhöhe



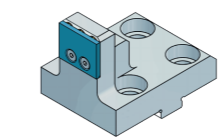
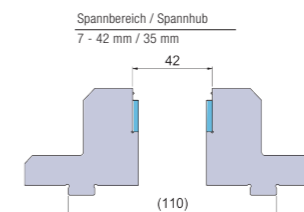
78.080.100



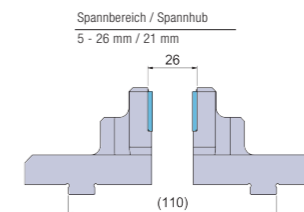
78.080.200



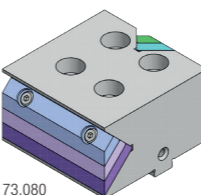
78.080.300



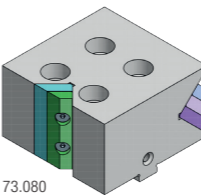
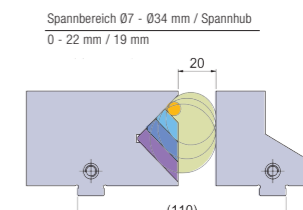
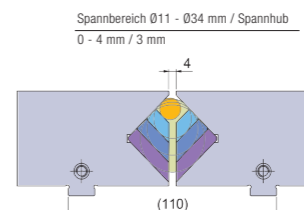
78.025.300



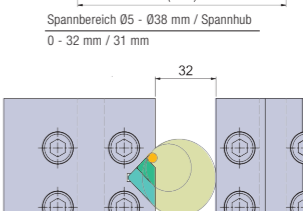
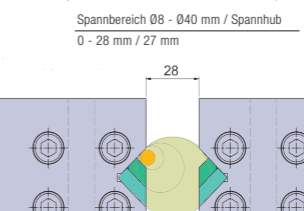
Prismenbacken



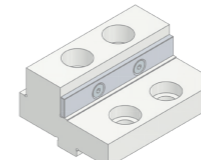
73.080



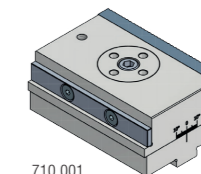
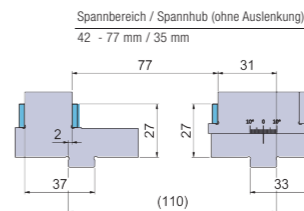
73.080



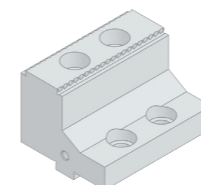
Pendelbacken



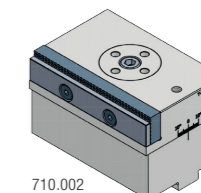
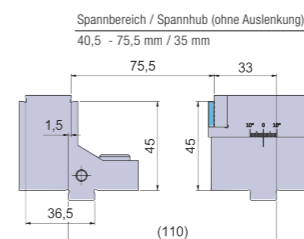
72.080
Festbacke zur Pendelbacke



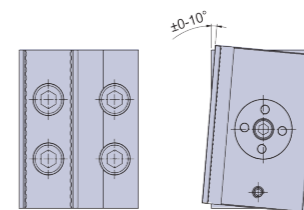
710.001
Pendelbacke



77.080
Festbacke zur Pendelbacke



710.002
Pendelbacke



Spannbackendetails siehe Rubrik 6
Zubehör siehe Rubrik 7