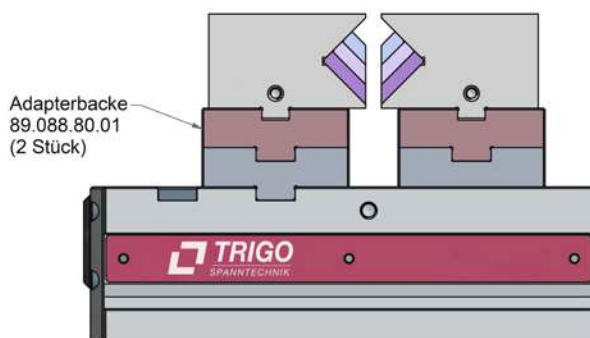
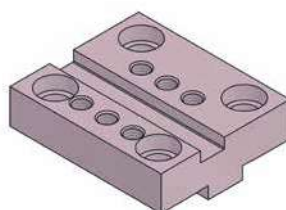
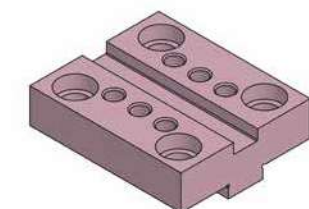
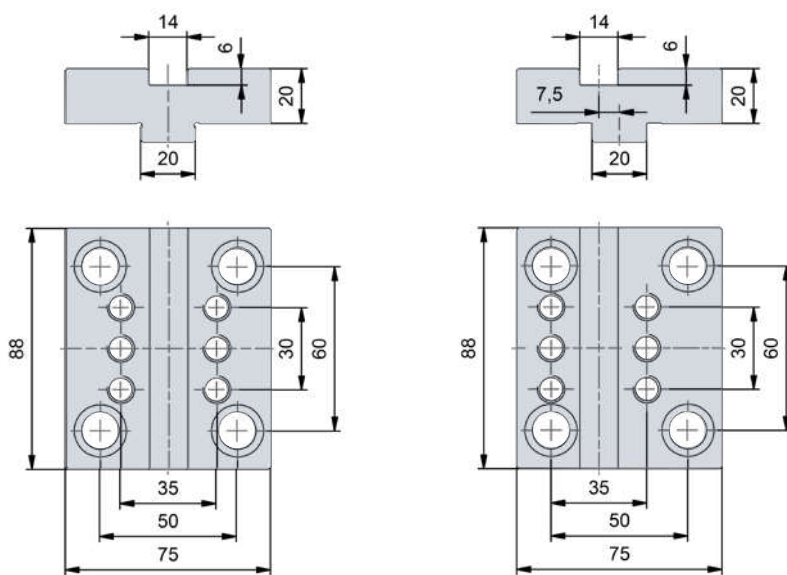


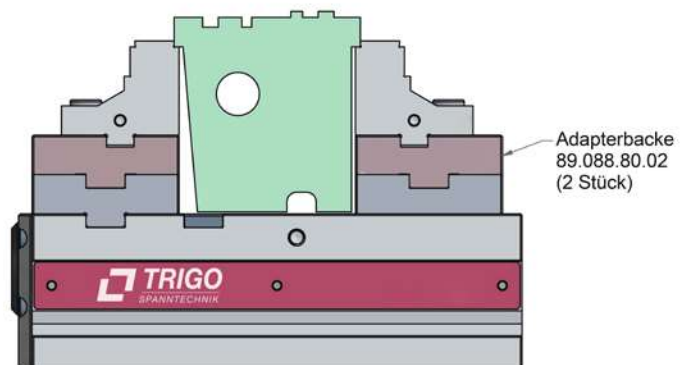
passend auf Trigo Spannsystem SCS 120

	Typ 1	Typ 2
Breite	88 mm	88 mm
Höhe	20 mm	20 mm
Nut-Versatz	0 mm	7,5 mm
Gewicht	0,8 kg	0,8 kg
Best.-Nr.	89.088.80.01	89.088.80.02

Adapterbacken zur Adaption des Spannbacken-Sortiments System 80 auf System 120.



Adapterbacke
89.088.80.01
(2 Stück)



Adapterbacke
89.088.80.02
(2 Stück)