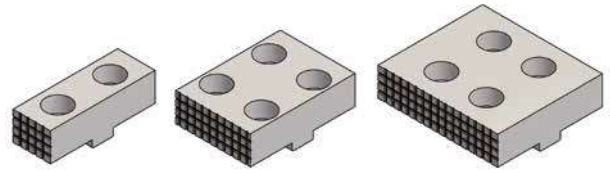
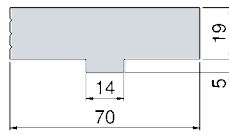


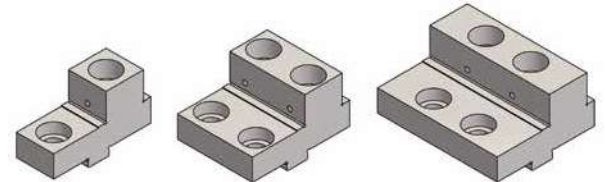
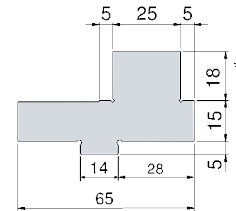
Wendebacke glatt / geriffelt

Breite	Best.-Nr.
25 mm	70.025
50 mm	70.050
80 mm	70.080



Stufenwendebacke

Breite	Best.-Nr.
25 mm	72.025
50 mm	72.050
80 mm	72.080



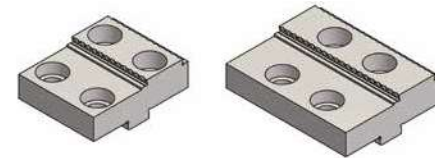
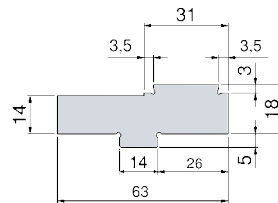
* Die Stufenhöhe kann über wechselbare Auflageleisten variiert werden.
Siehe Kapitel 7 Seite 7.150

Spezial-Grip-Wendebacke

flache Ausführung

Breite	Best.-Nr.
50 mm	77.050.20
80 mm	77.080.20

Spannflächen hartmetallbeschichtet

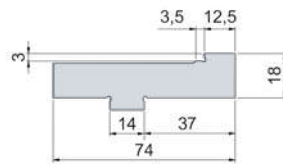


Spezial-Grip-Backe

flache Ausführung,
erweiterter Spannbereich

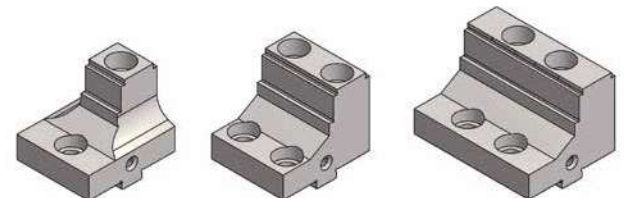
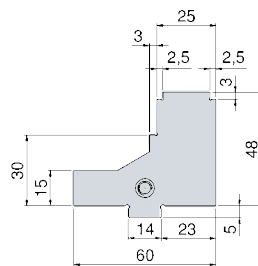
Breite	Best.-Nr.
80 mm	77.080.30

Spannflächen hartmetallbeschichtet



Feinstufenwendebacke

Breite	Best.-Nr.
25 mm	75.025
50 mm	75.050
80 mm	75.080

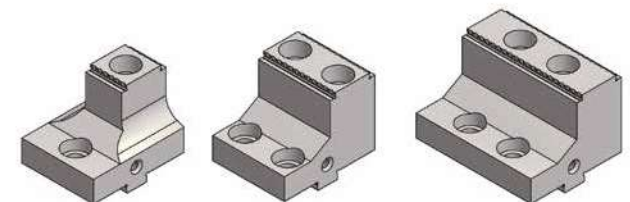
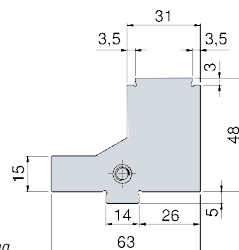


Spezial-Grip-Wendebacke

Breite	Best.-Nr.
25 mm	77.025 ¹⁾ 77.025.01 ²⁾
50 mm	77.050 ¹⁾ 77.050.01 ²⁾
80 mm	77.080 ¹⁾ 77.080.01 ²⁾

¹⁾ Spannflächen hartmetallbeschichtet

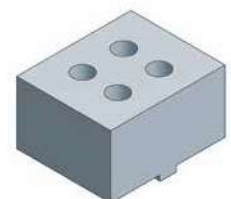
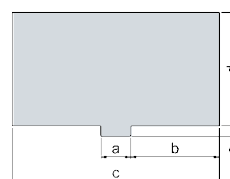
²⁾ spitze Ausführung für weiche Rohstoffe, ohne Beschichtung



Weiche Wendebacke

aus Stahl, alternativ Aluminium (feingefräst)

Breite	Bestell-Nr.	a	b	c	d	e
25	74.025	14	33	80	24	5
100	74.100	14	33	80	24	5
120	74.120	14	33	80	24	5
80	76.080 St	14	41,5	97	53	5
80	76.080 Al	14	41,5	97	53	5



Befestigungsschrauben für alle Backen im Lieferumfang enthalten