

TRIGO Doppelspannsystem

DUO 80 - 200

DUO 80 - 240



Kompaktes Doppelspannsystem mit „Dritte-Hand“-Funktion

TRIGO DUO eignet sich ganz besonders für die Mehrfachspannung – sowohl in horizontaler, als auch in vertikaler Ebene. Über eine Rechts-Links Gewindespindel werden die beiden beweglichen Backen zur Mittenbacke geführt. Ein integriertes Vorspannsystem hält dabei das zuerst eingelegte Werkstück in seiner Position fest, während das zweite Werkstück positioniert wird. Daraufhin kann der gemeinsame und gleichmäßige Spannkraftaufbau erfolgen.

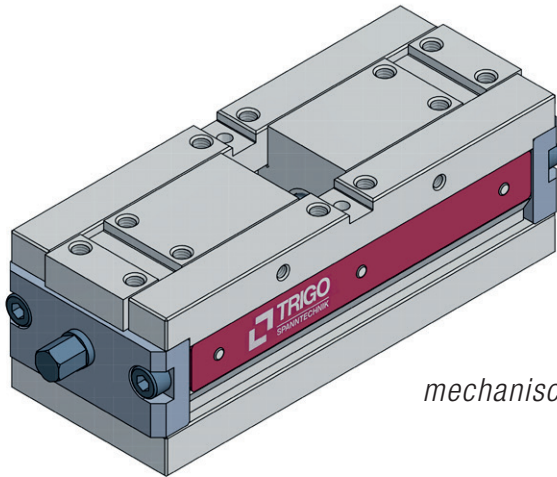
- Höchste Positions- und Wiederholgenauigkeit.
- Mit nur einer Spannstelle können nacheinander zwei Werkstücke gespannt werden.
- Dritte-Hand-Funktion einstellbar.
- Zwei wählbare Baulängen bieten bei Mehrfachaufbauten ein Maximum an Arbeitsraumnutzung und Werkstückanpassung. Das kompakte Grundelement eignet sich besonders auch als Konstruktionselement für die verschiedensten Anwendungen.
- Grundkörper aus legiertem Stahl garantiert hohe Steifigkeit und Formstabilität.
- Allseitig gehärtet und geschliffen – für höchste Ansprüche und Präzision.
- Bewährtes Backenaufsatzsystem.
- Mit Sonderbacken lassen sich Spannweiten über die Grundkörperlänge hinaus realisieren.
- Kostengünstige Lösungen durch einfach herzustellende Backenpaare.

Lieferbare Baugrößen:

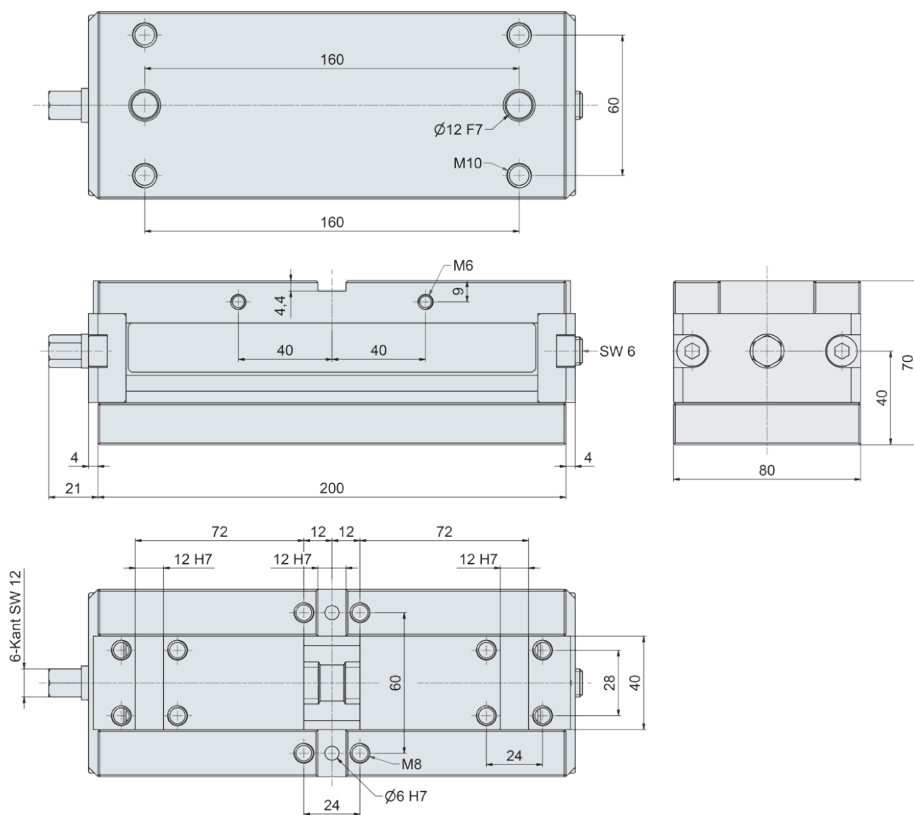
DUO 80 - 200 mechanisch

DUO 80 - 240 mechanisch





mechanisch



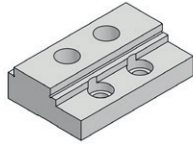
Trigo DUO 80-200 mechanisch

Spannkraft mechanisch	12 kN / 50 Nm
Spannschlittengesamthub A	2 x 12 mm
Spannwiederholgenauigkeit	± 0,01 mm
Gewicht	7,1 kg
Bestell-Nr.	DUO 80-200

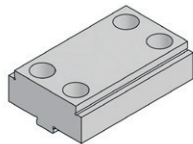
Spannbackendetails siehe Rubrik 6

Zubehör siehe Rubrik 7

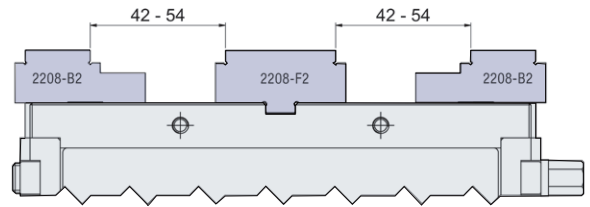
Fenstufenwendebacken +
Feinstufenmittenbacke



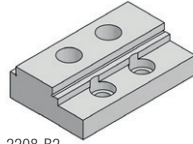
2208-B2



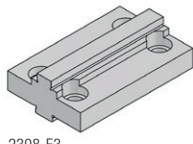
2208-F2



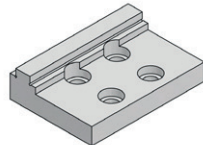
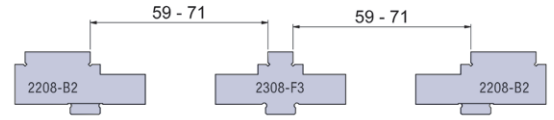
Bewegliche
Stufenwendebacke +
Stufenmittenbacke



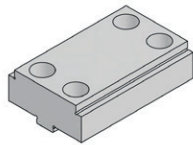
2208-B2



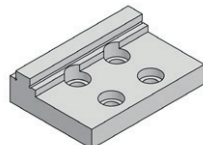
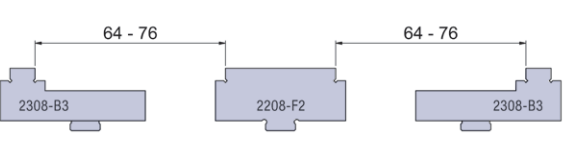
2308-F3



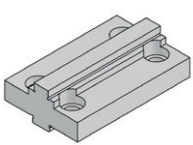
2308-B3



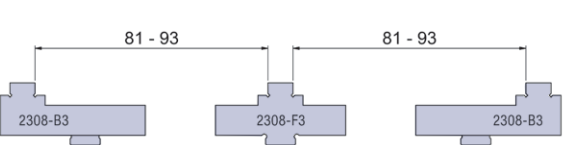
2208-F2



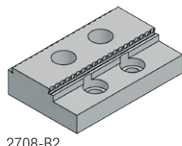
2308-B3



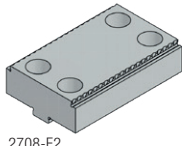
2308-F3



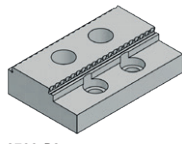
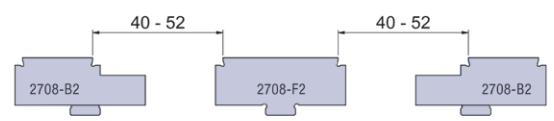
Spezial-Grip-Backe +
Spezial-Grip-Mittenbacke



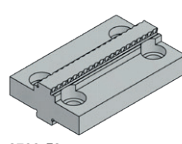
2708-B2



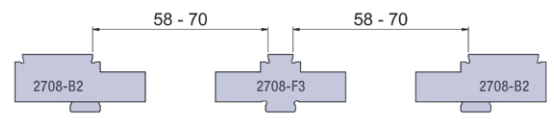
2708-F2



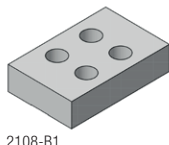
2708-B2



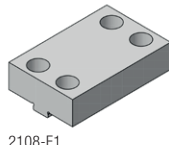
2708-F3



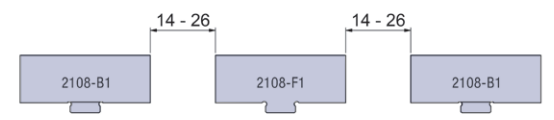
Harte Backen
ohne Stufen



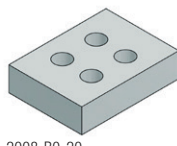
2108-B1



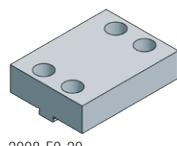
2108-F1



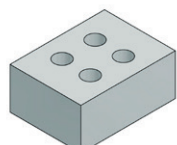
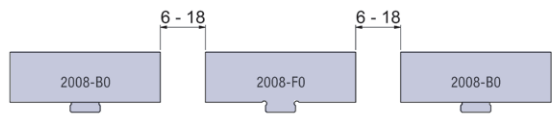
Bewegliche
Wendebacke, weich
+
Mittenbacke, weich



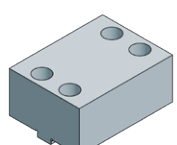
2008-B0-20



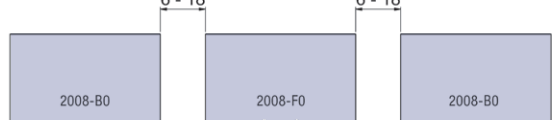
2008-F0-20

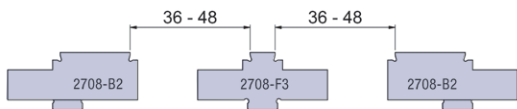
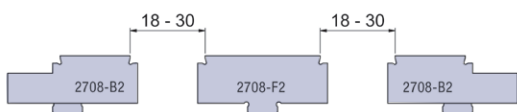
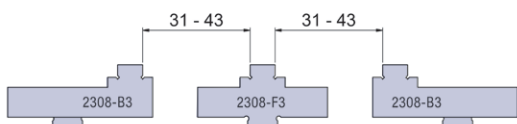
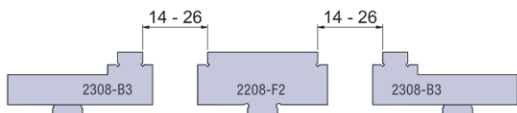
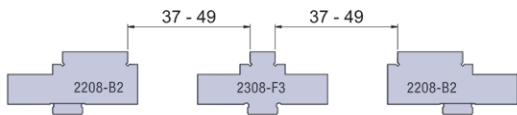
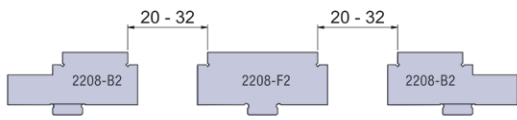


2008-B0-35



2008-F0-35

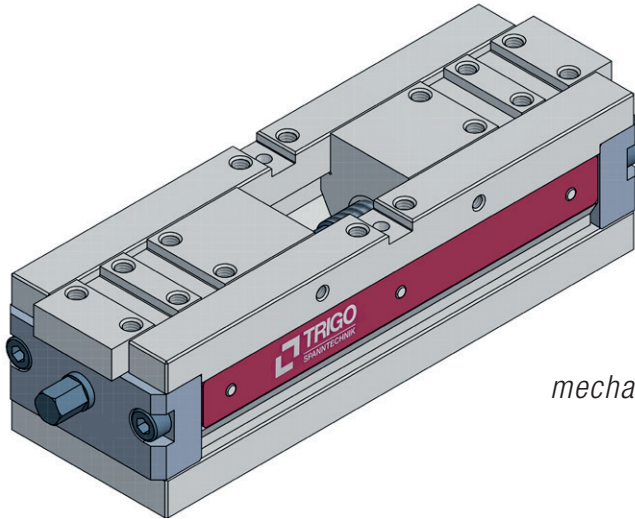




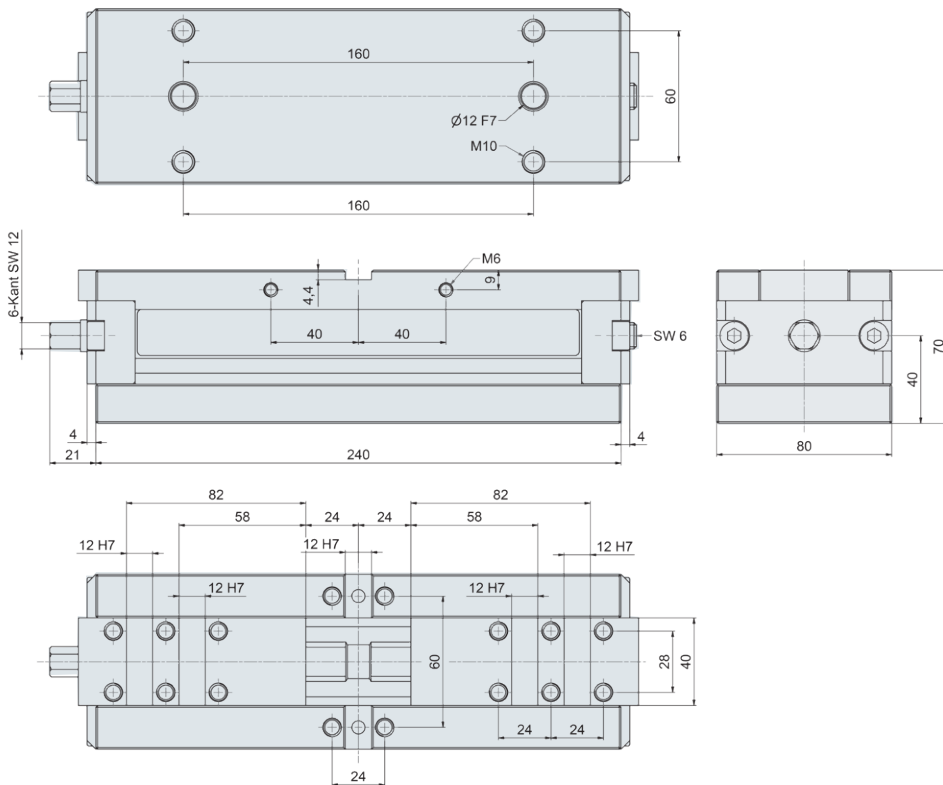
Keine komplette Spannbereichsüberdeckung

Spannbackendetails siehe Rubrik 6

Zubehör siehe Rubrik 7



mechanisch



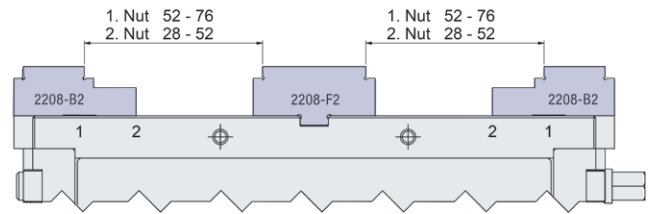
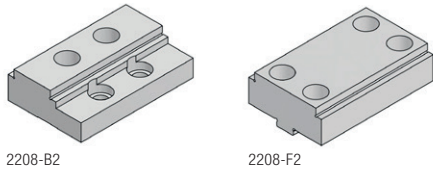
Trigo DUO 80-240 mechanisch

Spannkraft mechanisch	12 kN / 50 Nm
Spannschlittengesamthub A	2 x 24 mm
Spannwiederholgenauigkeit	± 0,01 mm
Gewicht	8,4 kg
Bestell-Nr.	DUO 80-240

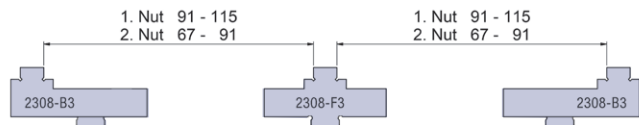
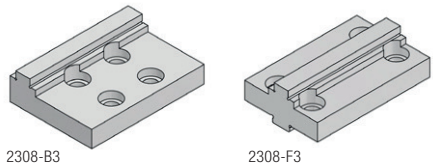
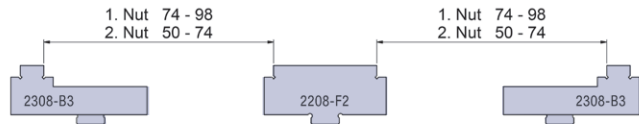
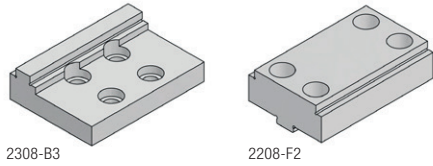
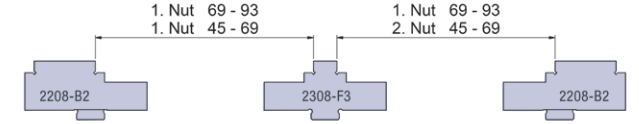
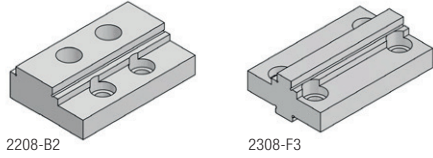
Spannbackendetails siehe Rubrik 6

Zubehör siehe Rubrik 7

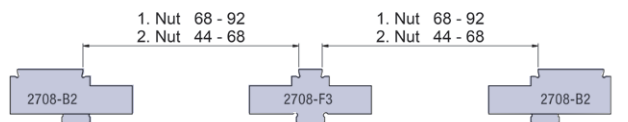
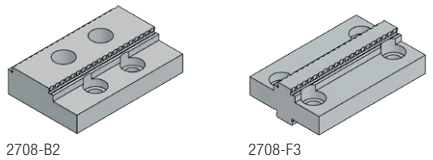
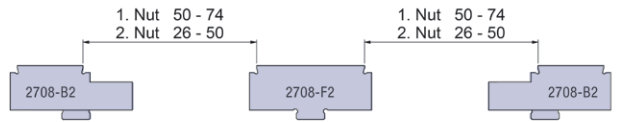
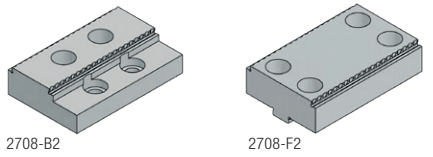
Fenstufenwendebacken +
Feinstufenmittenbacke



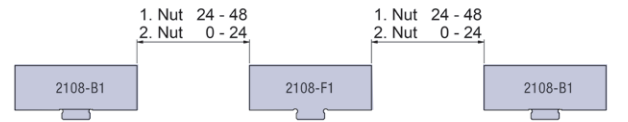
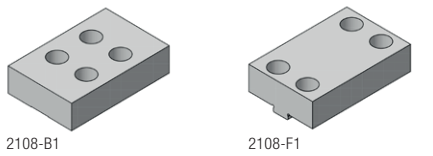
Bewegliche
Stufenwendebacke +
Stufenmittenbacke



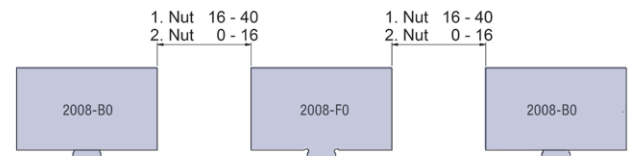
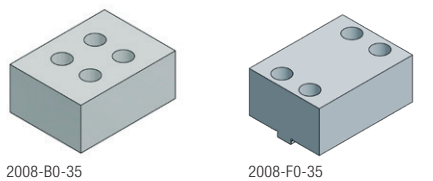
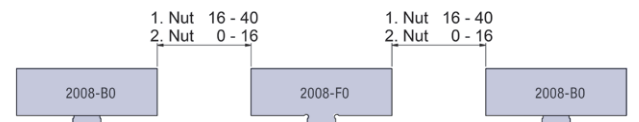
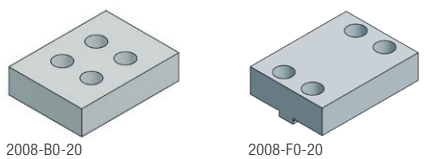
Spezial-Grip-Backe +
Spezial-Grip-Mittenbacke

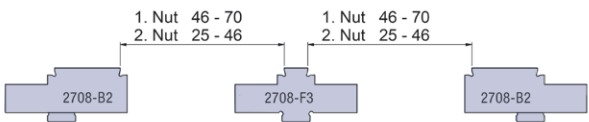
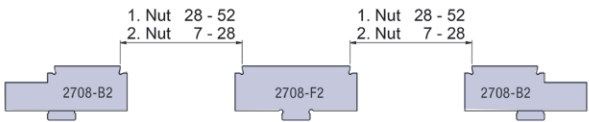
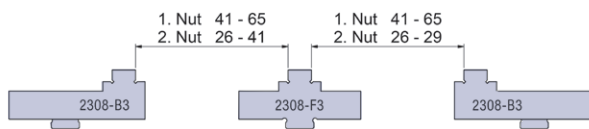
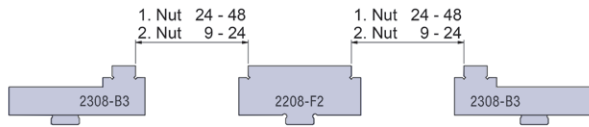
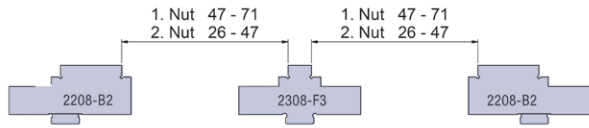
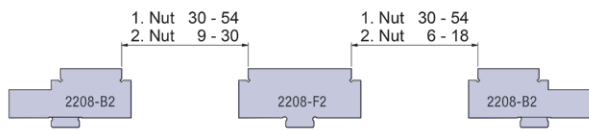


Harte Backen
ohne Stufen



Bewegliche
Wendebacke, weich
+
Mittenbacke, weich





Spannbackendetails siehe Rubrik 6
Zubehör siehe Rubrik 7